

System of impression trays.

Features

- Four upper and four lower trays
- Trays are made of transparent plexiglass
- Can be heated up to 98° C
- 3.5 mm width of tray ensures exceptional rigidity even if holes are drilled
- All trays have their own number to simplify identification
- Measuring calipers and the measuring template ensure a quick and hygienic selection of a tray with an exceptionally precise fit
- Refill boxes of four trays per desired number are available



Hager Worldwide Inc.
www.hagerworldwide.com

13322 Byrd drive
Odessa, FL 33556
800-328-2335

Select XXX.

Implants simplified

Single appointment implant impressions using the Miratray Implant impression tray

By Dr. Wim van Thoor, Netherlands. Information provided by Hager Worldwide, Inc.

The dental impression is the most important means of communication between dentist and dental technician. An impression should precisely mirror outline, preparation, and neighboring areas. Presently, excellent impression materials with high final hardness like poly-ether and A-silicone are available. They are suitable to produce a final implant impression.

The frequently used open-tray impression technique requires two appointments. Following are step-by-step instructions for single appointment implant impressions using the **Miratray Implant** impression tray.

Case I: Dentulous maxilla

A 47-year-old patient received implants after losing the front teeth 9 and 10. Both soft and hard tissue was increased.

Fig. 1: Shows the implants directly after exposure.

1. Fit a transparent tray (Fig. 2).
2. Mark positions of the implants and drill holes.
3. Take a final impression on the implant abut-

ment (Fig. 3).

4. Make two ceramic crowns as well as two more ceramic crowns for the neighboring teeth (Fig. 4).
5. Fit crowns in the mouth (Fig. 5).

Case II: Edentulous mandible

A 59-year-old patient, edentulous for 18 years, received two implants in the interforamen space of the mandible.

Fig. 6 shows the situation after exposure.

1. Fit and mark the opening on the transparent edentulous Miratray Implant tray to let the implant posts through (Fig. 7).
2. Drill the holes in the tray and fit (Fig. 8).
3. Take an impression of the edentulous maxilla and the bite registration. Negotiate the functional lines and fabricate the wax try-in. Then the bar can be fabricated and seated in the mandible (Fig. 9).
4. Fit the prosthesis to the bar (Fig. 10).



Fig. 1 The implants directly after exposure.

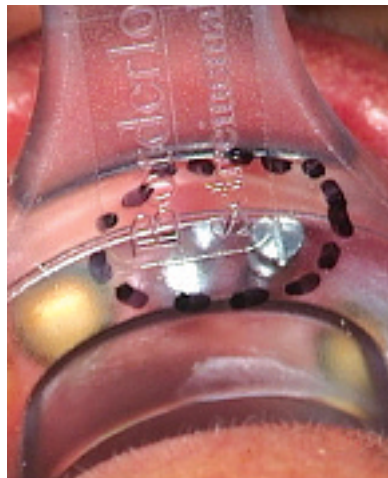


Fig. 2 Fit a transparent tray.

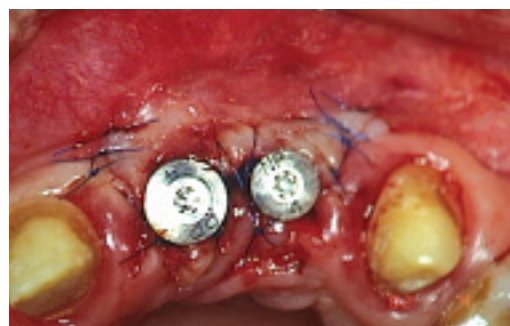


Fig. 3 Take a final impression.



Fig. 4 Make ceramic crowns.



Fig. 5 Fit crowns in the mouth.



Fig. 6 The situation after exposure.



Fig. 7 Fit and mark the opening on the transparent edentulous Miratray Implant tray.



Fig. 8 Drill holes in the tray and fit.



Fig. 9 Form the bar in the mandibula.



Fig. 10 Fit the prosthesis to the bar.